

## High volume solids silyl acrylate self polishing copolymer antifouling

### Product Description

Intersmooth 7465Si SPC is a high volume solids, high performance, low friction, self-polishing copolymer (SPC) antifouling, based on patented silyl acrylate polymer technology. It is particularly suitable for use where reduced solvent emissions are required and has been specifically designed for deep sea vessels at Newbuilding or Maintenance & Repair.

### Features

Self polishing copolymer (SPC) antifouling using patented silyl acrylate technology

Self smoothing with controlled biocide release and polishing rate

Low VOC content<sup>^</sup>  
394g/lit (EPA Method 24)  
210g/kg (EU Solvent Emissions Directive)

Excellent application properties

Low levels of overspray

### Benefits

High performing antifouling control

Predictable performance and polishing with up to 90month\* schemes for flexibility in drydocking schedule

Faster application and reduced paint wastage  
Reduced pail consumption

Lower solvent emissions to the atmosphere<sup>^</sup>

Smooth hull and low friction

Reduced wastage  
Reduced applicator exposure  
Lower contamination levels

\* 90 months applies to vessels covered by the extended dry docking (EDD) programme, mainly container vessels, pure car carriers and general cargo ships.

<sup>^</sup> Compared to Intersmooth® 460/465 SPC

### Product Information

**Colour** BEA814 – Brown, BEA817 – Red  
Note: The above codes will be substituted by BEA834 Brown and BEA837 Red when supplied from Felling and Dammam manufacturing locations

**Surface preparation** Intersmooth 7465Si SPC should always be applied over a recommended primer coating scheme

**Volume solids** 55% ± 2% (ISO 3233 : 1998)

**Typical film thickness** 125 microns dry (227 microns wet)

**Time to flooding** 10 hours at 25°C (Single coat)  
16 hours at 25°C (multiple coats)

**Minimum application temperature** -5°C

**Method of application** Airless spray, Brush, Roller

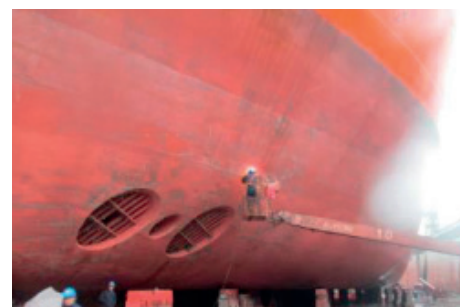
### In-Service Performance



Performance on a 153,152 DWT Chemical/Products Tanker after 36 months in-service  
55% activity > 3 knots, trading globally



Performance on a 68,910 DWT Container Vessel after 34 months in-service  
80% activity > 3 knots, trading globally



Performance on a 34,030 DWT Heavy Lift Vessel after 33 months in-service  
40% activity > 3 knots, trading globally

To find out more visit: [www.international-marine.com](http://www.international-marine.com)

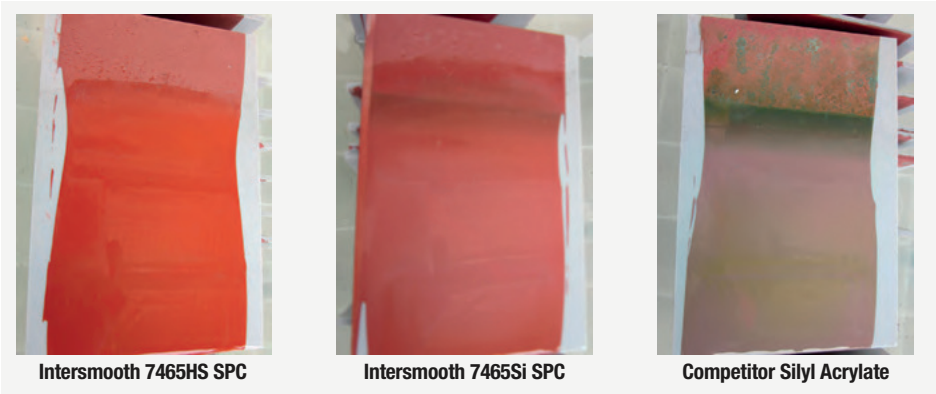
## High volume solids silyl acrylate self polishing copolymer antifouling

### Excellent Resistance to Patina Formation

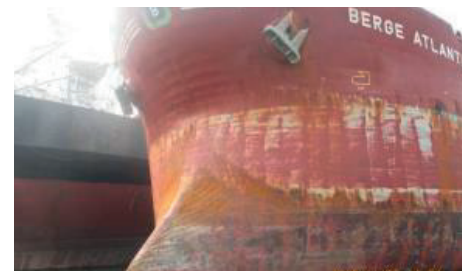
Intermooth 7465Si SPC shows excellent resistance to copper patina formation and discolouration.

**Test Method:**

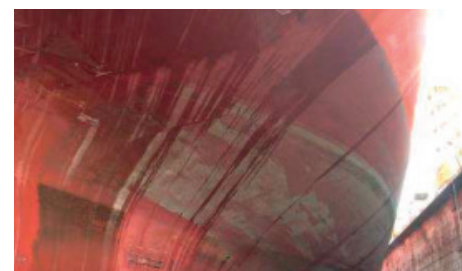
Continuous waterline immersion in 10% salinity salt water (Results after 3 weeks immersion)



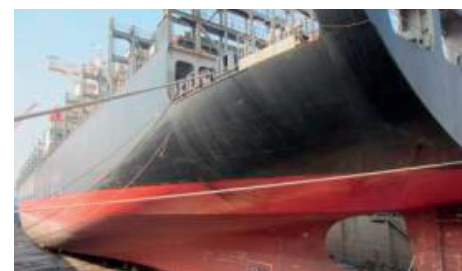
### In-Service Performance



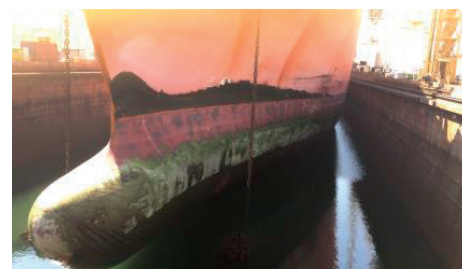
Performance on a 172,704 DWT Bulk Carrier Vessel after 35 months in service  
66% activity > 3 knots trading globally



Performance on a 84,455 DWT LNG Carrier Vessel after 30 months in-service  
73% activity > 3 knots, trading globally



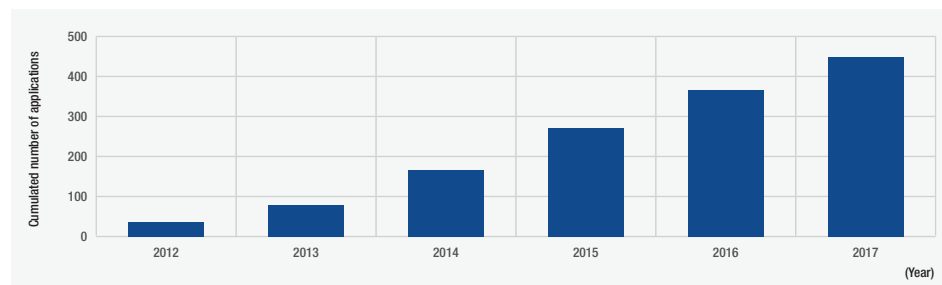
Performance on a 103,614 DWT LNG Carrier Vessel after 23 months in-service  
77% activity > 3 knots, trading globally



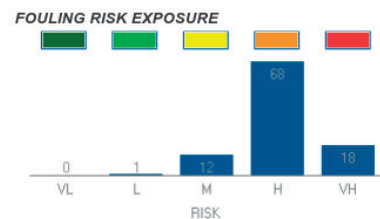
Performance on a 84,303 DWT LNG Carrier Vessel after 56 months in-service  
71% activity > 3 knots, trading globally

### Track Record

Since launch in 2012, Intersmooth 7465Si SPC has shown significant growth in track record.



### Intermooth® 7465Si SPC Performance case study



- Performance on a 26,528 DWT LNG Tanker after 60 months in-service performance
- Trading route and fouling risk exposure indicated via Intertrac
- Excellent performance after trading 86% of time in high / very high fouling challenge locations

For each of our products the relevant Product Data Sheet, Material Safety Data Sheet and package labelling comprise an integral information system about the product in question. Copies of our Product Data Sheets and Material Safety Data Sheets are available on request or from our website.

Unless otherwise agreed in writing, all products supplied and technical advice or recommendations given are subject to the Conditions of Sale of our supplying company and the provisions of the relevant product data sheet.

To find out more visit: [www.international-marine.com](http://www.international-marine.com)